



# HMG-2 Polyclonal Antibody

<b>Catalog No</b>	YP-Ab-01795
<b>Isotype</b>	IgG
<b>Reactivity</b>	Human;Mouse;Rat
<b>Applications</b>	WB;IHC;IF;ELISA
<b>Gene Name</b>	HMGB2
<b>Protein Name</b>	High mobility group protein B2
<b>Immunogen</b>	The antiserum was produced against synthesized peptide derived from human HMGB2. AA range:131-180
<b>Specificity</b>	HMG-2 Polyclonal Antibody detects endogenous levels of HMG-2 protein.
<b>Formulation</b>	Liquid in PBS containing 50% glycerol, 0.5% BSA and 0.02% sodium azide.
<b>Source</b>	Polyclonal, Rabbit,IgG
<b>Purification</b>	The antibody was affinity-purified from rabbit antiserum by affinity-chromatography using epitope-specific immunogen.
<b>Dilution</b>	Western Blot: 1/500 - 1/2000. Immunohistochemistry: 1/100 - 1/300. Immunofluorescence: 1/200 - 1/1000. ELISA: 1/10000. Not yet tested in other applications.
<b>Concentration</b>	1 mg/ml
<b>Purity</b>	≥90%
<b>Storage Stability</b>	-20°C/1 year
<b>Synonyms</b>	HMGB2; HMG2; High mobility group protein B2; High mobility group protein 2; HMG-2
<b>Observed Band</b>	27kD
<b>Cell Pathway</b>	Nucleus . Chromosome . Cytoplasm . Secreted . In basal state predominantly nuclear. .
<b>Tissue Specificity</b>	Expressed in gastric and intestinal tissues (at protein level).
<b>Function</b>	function: Binds preferentially single-stranded DNA and unwinds double stranded DNA., similarity: Belongs to the HMGB family., similarity: Contains 2 HMG box DNA-binding domains., subunit: Component of the SET complex, which also contains SET, ANP32A, APEX1 and NME1. Directly interacts with SET.,
<b>Background</b>	This gene encodes a member of the non-histone chromosomal high mobility group protein family. The proteins of this family are chromatin-associated and ubiquitously distributed in the nucleus of higher eukaryotic cells. In vitro studies have demonstrated that this protein is able to efficiently bend DNA and form DNA circles. These studies suggest a role in facilitating cooperative interactions between cis-acting proteins by promoting DNA flexibility. This protein was also reported to be involved in the final ligation step in DNA end-joining processes of DNA double-strand breaks repair and V(D)J recombination. [provided by RefSeq,



Jul 2008],

---

**matters needing attention**

Avoid repeated freezing and thawing!

---

**Usage suggestions**

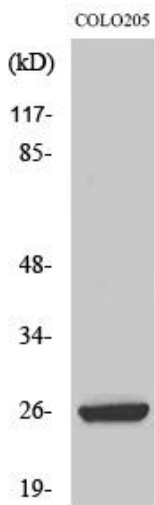
This product can be used in immunological reaction related experiments. For more information, please consult technical personnel.

---

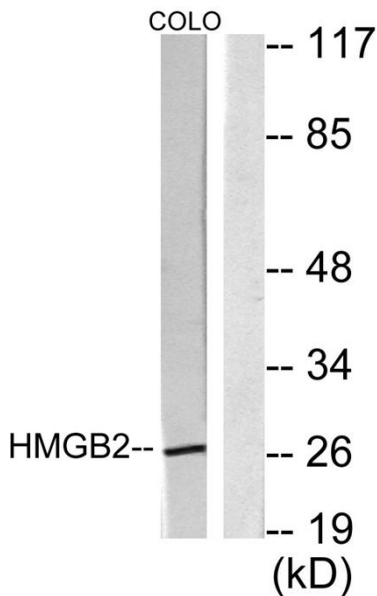
---



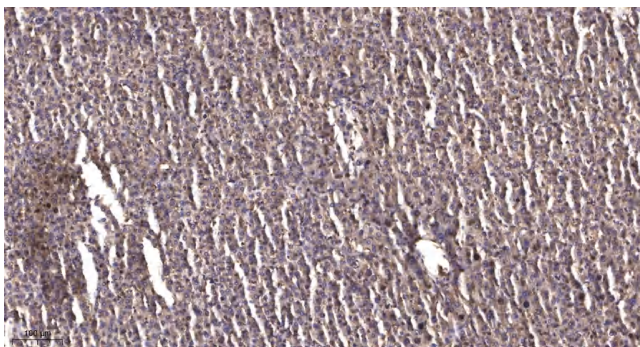
## Products Images



Western Blot analysis of various cells using HMG-2 Polyclonal Antibody



Western blot analysis of lysates from COLO205 cells, using HMGB2 Antibody. The lane on the right is blocked with the synthesized peptide.



Immunohistochemical analysis of paraffin-embedded human liver cancer. 1, Antibody was diluted at 1:200(4° overnight). 2, Tris-EDTA,pH9.0 was used for antigen retrieval. 3,Secondary antibody was diluted at 1:200(room temperature, 45min).